

300Mbps Wireless Mini USB Adapter

EW-7722UTn V2

Quick Installation Guide

Version 1.0 / September, 2011



COPYRIGHT

Copyright© by Edimax Technology Co, LTD. all rights reserved. No part of this publication may be reproduced, transmitted, transcribed, stored in a retrieval system, or translated into any language or computer language, in any form or by any means, electronic, mechanical, magnetic, optical, chemical, manual or otherwise, without the prior written permission of this company.

This company makes no representations or warranties, either expressed or implied, with respect to the contents hereof and specifically disclaims any warranties, merchantability or fitness for any particular purpose. Any software described in this manual is sold or licensed "as is". Should the programs prove defective following their purchase, the buyer (and not this company, its distributor, or its dealer) assumes the entire cost of all necessary servicing, repair, and any incidental or consequential damages resulting from any defect in the software. Further, this company reserves the right to revise this publication and to make changes from time to time in the contents hereof without obligation to notify any person of such revision or changes.

The product you have purchased and the setup screen may appear slightly different from those shown in this QIG. For more detailed information about this product, please refer to the User's Manual on the CD-ROM. The software and specifications are subject to change without notice. Please visit our web site www.edimax.com for the update. All right reserved including all brand and product names mentioned in this manual are trademarks and/or registered trademarks of their respective holders.



(1)



(2)



(3)



(4)

1. Package Contents (EN)

- (1) Wireless USB Adapter x1
- (2) USB cable x 1
- (3) Quick Installation Guide x1
- (4) CD (EZmax Wizard / Utility, Multi-language Quick Installation Guide & User Manual) x1

1. Obsah balení (CZ)

- (1) Bezdrátový USB adaptér x1
- (2) USB kabel x1
- (3) Průvodce rychlou instalací x1
- (4) CD (EZmax Wizard/utilita, vícejazyčný průvodce rychlou instalací & uživatelská příručka) x1

1. Pakkens indhold (DA)

- (1) Trådløs USB adapter x1
- (2) USB-kabel x 1
- (3) Hurtig installationsvejledning x1
- (4) Cd (EZmax guide / hjælpeprogram, hurtig installationsvejledning på flere sprog & brugervejledning) x1

1. Packungsinhalt (DE)

- (1) WLAN USB-Adapter x1
- (2) USB-Kabel x1
- (3) Schnellanleitung x1
- (4) CD (EZmax-Assistent / Dienstprogramm, mehrsprachige Schnellanleitung & Benutzerhandbuch) x1

1. Contenido del Paquete (ES)

- (1) Adaptador USB Inalámbrico x1
- (2) Cable USB x1
- (3) Guía de Instalación Rápida x1
- (4) CD (EZmax Wizard / Utilitario, Guía de Instalación Rápida Multilingüe & Manual del Usuario) x1

1. A csomag tartalma (HU)

- (1) 1 db vezeték nélküli USB-csatlakozó
- (2) 1 db USB-kábel
- (3) 1 db telepítési útmutató
- (4) 1 db CD (EZmax varázsló/segédprogram, többnyelvű telepítési útmutató és felhasználói kézikönyv)

1. Inhoud van de verpakking (NL)

- (1) Draadloze USB-adapter x1
- (2) USB-kabel x1
- (3) Snelstartgids x1
- (4) CD (EZmax Wizard / Utility, meertalige snelstartgids en gebruikershandleiding x1)

1. Conteúdo da Embalagem (PT)

- (1) Adaptador USB Sem Fio x1
- (2) Cabo USB x1
- (3) Guia de Instalação Rápida x1
- (4) CD (EZmax Wizard / Utility, Guia de Instalação Rápida Multilíngüe & Manual de Usuário) x1

1. Contenu de l'emballage (FR)

- (1) 1 adaptateur sans fil USB
- (2) 1 câble USB
- (3) 1 Guide d'Installation Rapide
- (4) 1 CD (Assistant EZmax / Utilitaire, GIR multilingue & Manuel utilisateur)

1. Contenuti del pacchetto (IT)

- (1) Adattatore USB Wireless x1
- (2) Cavo USB x1
- (3) Guida di installazione rapida x1
- (4) CD (Installazione Guidata / Utilità EZmax, Guida di Installazione Rapida Multilingue & Manuale d'Uso) x1

1. Zawartość opakowania (PL)

- (1) Bezprzewodowy karta sieciowa USB x1
- (2) Kabel USB x1
- (3) Przewodnik szybkiej instalacji x1
- (4) Płyta CD (Kreator EZmax / Oprogramowanie narzędziowe, wielojęzyczny przewodniki szybkiej instalacji i instrukcja obsługi) x1

1. Continutul pachetului (RO)

- (1) Adaptor USB Wireless x1
- (2) Cablu USB x1
- (3) Ghid de Instalare Rapida x1
- (4) CD (Wizard EZmax / Utilitar, Ghid de Instalare Rapida in mai multe limbi & Manualul Utilizatorului) x1

1. Комплектация (RU)

- (1) Беспроводной USB адаптер – 1 шт
- (2) USB кабель – 1 шт
- (3) Инструкция по быстрой установке (QIG) - 1 шт
- (4) CD (EZmax Setup Wizard / утилита, многоязычный QIG (Quick Installation Guide) & инструкция пользователя) - 1 шт

1. PAKETETS INNEHÅLL (SV)

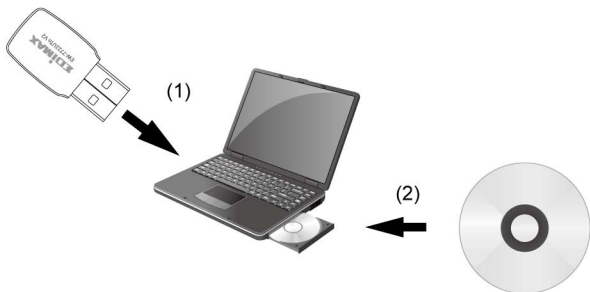
- (1) Trådlös USB Adapter x1
- (2) USB-kabel x 1
- (3) Snabbinstallationsguide x1
- (4) CD (EZmax-guide/funktion, flerspråkig, snabbinstallationsguide och bruksanvisning)

1. Obsah balenia (SK)

- (1) Bezdrôtový USB adaptér ×1
- (2) USB kábel ×1
- (3) Sprievodca rýchlou inštaláciou ×1
- (4) CD (EZmax Wizard/utilita, viacjazyčný sprievodca rýchlou inštaláciou & používateľská príručka) ×1

1. Paket içeriği (TU)

- (1) Kablosuz USB Adaptörü x1
- (2) USB kablosu x1
- (3) Çabuk Kurulum Kılavuzu x1
- (4) CD (EZmax Sihirbazı / Yardımcı Program, Birden Çok Dilde Çabuk Kurulum Kılavuzu & Kullanım Kılavuzu) x1



(3)



English Nederlands Deutsch Français Italiano

Español Português Polski Český Magyar Русский Swedish Danish

Romana Türkçe Slovakia 繁體中文 簡體中文

Exit

EDIMAX
COMMUNICATIONS TECHNOLOGY

Wireless

www.edimax.com

Contact us

2. Network Card Installation (EN)

- (1) Hardware Installation
- (2) Software Installation
- (3) Please choose the language to start the configuration.

For advanced settings and other features of this wireless network card, please refer to user manual enclosed in supplied CD-ROM.

2. Instalace bezdrátového USB adaptéru (CZ)

- (1) Instalace hardwaru
- (2) Instalace softwaru
- (3) Pro spuštění konfigurace vyberte prosím požadovaný jazyk.

Pokročilá nastavení a další funkce tohoto bezdrátového USB adaptéru - viz uživatelská příručka na dodaném disku CD-ROM.

2. Installation af netværkskort (DA)

- (1) Installation af hardware
- (2) Installation af software
- (3) Venligst vælg sprog til at starte konfigurationen.

For avancerede indstillinger og andre funktioner på dette trådløse netværkskort, venligst se brugervejledningen på vedlagte cd-rom.

2. Installation der Netzwerkkarte (DE)

- (1) Hardwareinstallation
- (2) Softwareinstallation
- (3) Bitte wählen Sie eine Sprache aus, um die Konfiguration zu starten.

Erweiterte Einstellungen und andere Funktionen dieser WLAN-Netzwerkkarte finden Sie im Benutzerhandbuch, das auf der beiliegenden CD-ROM enthalten ist.

2. Instalación de Tarjeta de Red (ES)

- (1) Instalación del Hardware
- (2) Instalación del Software
- (3) Elija el idioma para iniciar la configuración.

Para configuraciones avanzadas y otros atributos de esta tarjeta de Red inalámbrica, consulte al Manual del Usuario adjunto en el CD-ROM suministrado.

2. Installation de la carte réseau (FR)

- (1) Installation matérielle
- (2) Installation logicielle
- (3) Choisissez une langue pour commencer la configuration.

Pour obtenir plus d'informations sur les paramètres avancés ou les autres caractéristiques de cette carte réseau sans fil, référez-vous au manuel utilisateur contenu dans le CD fourni.

2. A hálózati kártya telepítése (HU)

- (1) Hardvertelepítés
- (2) Szoftvertelepítés
- (3) A beállítás elindításához válasszon nyelvet.

A vezeték nélküli hálózati kártya speciális beállításával és további jellemzőivel kapcsolatos információkat a mellékelt CD-ROM-on található kézikönyvben talál.

2. Installazione della scheda di rete (IT)

- (1) Installazione Hardware
- (2) Installazione Software
- (3) Selezionate la lingua per avviare la configurazione

Per le impostazioni avanzate e le altre funzioni di questa scheda di rete wireless, si rimanda al manuale d'uso compreso nel CD-ROM in dotazione.

2. Installatie van de netwerkaart (NL)

- (1) Installatie van de hardware
- (2) Software-installatie
- (3) Selecteer een taal om de configuratie te starten.

Voor geavanceerde instellingen en andere functies van de draadloze USB-netwerkaart verwijzen wij u naar de gebruikershandleiding op de meegeleverde CR-ROM.

2. Instalacja karty sieciowej (PL)

- (1) Instalacja sprzętu
- (2) Instalacja oprogramowania
- (3) Należy wybrać język, aby rozpocząć instalację.

Instrukcja obsługi znajdująca się na dołączonej płycie CD zawiera informacje o zaawansowanych ustawieniach oraz pozostałych funkcjach bezprzewodowej karty sieciowej.

2. Instalação da Placa de Rede (PT)

- (1) Instalação do Hardware
- (2) Instalação do Software
- (3) Escolha o idioma para iniciar a configuração.

Para configurações avançadas e outros atributos desta placa de rede sem fio, refira-se ao Manual de Usuário manual anexo em CD-ROM fornecido.

2. Instalarea placii de retea (RO)

- (1) Instalarea Hardware
- (2) Instalarea Software
- (3) Alegeti limba pentru a incepe configurarea.

Pentru setari avansate si alte caracteristici ale acestei placii de retea wireless, consultati manualul de utilizare de pe CD-ROM.

2. Установка сетевого адаптера (RU)

- (1) Установка физического устройства
- (2) Установка программного обеспечения
- (3) Пожалуйста, выберите язык для запуска процесса настройки.

Для дополнительных настроек этого адаптера и получения более полной информации, пожалуйста, прочтите Инструкцию пользователя на CD- диске из комплекта.

2. Inštalácia bezdrôtového USB adaptéra (SK)

- (1) Inštalácia hardvéru
- (2) Inštalácia softvéru
- (3) Pre spustenie konfigurácie vyberte, prosím, požadovaný jazyk.

Pokročilé nastavenia a ďalšie funkcie tohto bezdrôtového USB adaptéra – pozrite používateľskú príručku na dodanom disku CD-ROM.

2. Installation av nätverkskort (SV)

- (1) Installation av maskinvara
- (2) Installation av mjukvara
- (3) Välj språk för att starta konfigurationen.

För avancerade inställningar och andra funktioner för detta nätverkskort, se bruksanvisningen i den medföljande CD-skivan.

2. Ağ Kartı Kurulumu (TU)

- (1) Donanım Kurulumu
- (2) Yazılım Kurulumu
- (3) Lütfen yapılandırmayı başlatmak için dil seçin.

Kablosuz ağ kartının gelişmiş ayarları ve diğer özellikleri için lütfen verilen CD-ROM'da yer alan kullanım kılavuzuna başvurun.

Federal Communication Commission Interference Statement

This equipment has been tested and found to comply with the limits for a Class B digital device, pursuant to Part 15 of FCC Rules. These limits are designed to provide reasonable protection against harmful interference in a residential installation. This equipment generates, uses, and can radiate radio frequency energy and, if not installed and used in accordance with the instructions, may cause harmful interference to radio communications. However, there is no guarantee that interference will not occur in a particular installation. If this equipment does cause harmful interference to radio or television reception, which can be determined by turning the equipment off and on, the user is encouraged to try to correct the interference by one or more of the following measures:

1. Reorient or relocate the receiving antenna.
2. Increase the separation between the equipment and receiver.
3. Connect the equipment into an outlet on a circuit different from that to which the receiver is connected.
4. Consult the dealer or an experienced radio technician for help.

FCC Caution

This device and its antenna must not be co-located or operating in conjunction with any other antenna or transmitter. This device complies with Part 15 of the FCC Rules. Operation is subject to the following two conditions: (1) this device may not cause harmful interference, and (2) this device must accept any interference received, including interference that may cause undesired operation. Any changes or modifications not expressly approved by the party responsible for compliance could void the authority to operate equipment.

Federal Communications Commission (FCC) Radiation Exposure Statement

This equipment complies with FCC radiation exposure set forth for an uncontrolled environment. In order to avoid the possibility of exceeding the FCC radio frequency exposure limits, human proximity to the antenna shall not be less than 2.5cm (1 inch) during normal operation.

Federal Communications Commission (FCC) RF Exposure Requirements

SAR compliance has been established in the laptop computer(s) configurations with PCMCIA slot on the side near the center, as tested in the application for certification, and can be used in laptop computer(s) with substantially similar physical dimensions, construction, and electrical and RF characteristics. Use in other devices such as PDAs or lap pads is not authorized. This transmitter is restricted for use with the specific antenna tested in the application for certification. The antenna(s) used for this transmitter must not be co-located or operating in conjunction with any other antenna or transmitter.

R&TTE Compliance Statement

This equipment complies with all the requirements of DIRECTIVE 1999/5/EC OF THE EUROPEAN PARLIAMENT AND THE COUNCIL of March 9, 1999 on radio equipment and telecommunication terminal equipment and the mutual recognition of their conformity (R&TTE). The R&TTE Directive repeals and replaces in the directive 98/13/EEC (Telecommunications Terminal Equipment and Satellite Earth Station Equipment) As of April 8, 2000.

Safety

This equipment is designed with the utmost care for the safety of those who install and use it. However, special attention must be paid to the dangers of electric shock and static electricity when working with electrical equipment. All guidelines of this and of the computer manufacture must therefore be allowed at all times to ensure the safe use of the equipment.

EU Countries Intended for Use

The ETSI version of this device is intended for home and office use in Austria, Belgium, Bulgaria, Cyprus, Czech, Denmark, Estonia, Finland, France, Germany, Greece, Hungary, Ireland, Italy, Latvia, Lithuania, Luxembourg, Malta, Netherlands, Poland, Portugal, Romania, Slovakia, Slovenia, Spain, Sweden, Turkey, and United Kingdom. The ETSI version of this device is also authorized for use in EFTA member states: Iceland, Liechtenstein, Norway, and Switzerland.

EU Countries Not Intended for Use

None

EU Declaration of Conformity

- English:** This equipment is in compliance with the essential requirements and other relevant provisions of Directive 1999/5/EC, 2009/125/EC.
- French:** Cet équipement est conforme aux exigences essentielles et autres dispositions de la directive 1999/5/CE, 2009/125/CE
- Czechian:** Toto zařízení je v souladu se základními požadavky a ostatními příslušnými ustanoveními směrnic 1999/5/ES, 2009/125/ES.
- Polish:** Urządzenie jest zgodne z ogólnymi wymaganiami oraz szczególnymi warunkami określonymi Dyrektywą UE 1999/5/EC, 2009/125/EC
- Romanian:** Acest echipament este în conformitate cu cerințele esențiale și alte prevederi relevante ale Directivei 1999/5/CE, 2009/125/CE.
- Russian:** Это оборудование соответствует основным требованиям и положениям Директивы 1999/5/EC, 2009/125/EC.
- Magyar:** Ez a berendezés megfelel az alapvető követelményeknek és más vonatkozó irányelveknek (1999/5/EK, 2009/125/EC)
- Türkçe:** Bu cihaz 1999/5/EC, 2009/125/EC direktifleri zorunlu istekler ve diğer hükümlerle ile uyumludur.
- Ukrainian:** Обладнання відповідає вимогам і умовам директиви 1999/5/EC, 2009/125/EC.
- Slovakian:** Toto zariadenie spĺňa základné požiadavky a ďalšie príslušné ustanovenia smerníc 1999/5/ES, 2009/125/ES.
- German:** Dieses Gerät erfüllt die Voraussetzungen gemäß den Richtlinien 1999/5/EC, 2009/125/EC.
- Spanish:** El presente equipo cumple los requisitos esenciales de la Directiva 1999/5/EC, 2009/125/EC.
- Italian:** Questo apparecchio è conforme ai requisiti essenziali e alle altre disposizioni applicabili della Direttiva 1999/5/CE, 2009/125/CE.
- Dutch:** Dit apparaat voldoet aan de essentiële eisen en andere van toepassing zijnde bepalingen van richtlijn 1999/5/EC, 2009/125/EC.
- Portuguese:** Este equipamento cumpre os requisitos essenciais da Directiva 1999/5/EC, 2009/125/EC
- Norwegian:** Dette utstyret er i samsvar med de viktigste kravene og andre relevante regler i Direktiv 1999/5/EC, 2009/125/EC.
- Swedish:** Denna utrustning är i överensstämmelse med de väsentliga kraven och övriga relevanta bestämmelser i direktiv 1999/5/EG, 2009/125/EG.
- Danish:** Dette udstyr er i overensstemmelse med de væsentligste krav og andre relevante forordninger i direktiv 1999/5/EC, 2009/125/EC.
- Finnish:** Tämä laite täyttää direktiivien 1999/5/EY, 2009/125/EY oleelliset vaatimukset ja muut asiaankuuluvat määräykset.

FOR USE IN



WEEE Directive & Product Disposal



At the end of its serviceable life, this product should not be treated as household or general waste. It should be handed over to the applicable collection point for the recycling of electrical and electronic equipment, or returned to the supplier for disposal.

Declaration of Conformity

We, Edimax Technology Co., LTD., declare under our sole responsibility, that the equipment described below complies with the requirements of the European R&TTE directive (2006/95/EC,).

Equipment : 300Mbps Wireless Mini USB Adapter
Model No. : EW-7722UTn V2

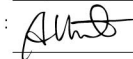
The following European standards for essential requirements have been followed:

Spectrum	: ETSI EN 300 328 : V1.7.1(2006-10)
EMC	: EN 301 489-1 V1.8.1(2008-04) EN 301 489-17 V1.3.2(2009-05)
EMF	: EN 62311(2008-11)
Safety (LVD)	: IEC 60950-1 : 2005(2 nd Edition) EN 60950-1 : 2006+A11:2009

Edimax Technology Co., Ltd.
No. 3, Wu Chuan 3rd Road,
Wu-Ku Industrial Park.
Taipei Hsien, Taiwan

Date of Signature : September, 2011

Signature :



Printed Name : Albert

Title :

Director
Edimax Technology CO., LTD.



Edimax Headquarters

Edimax Technology Co., Ltd.

Add: 6F., No. 3, Wu-Chuan 3rd Road, Wu-Gu, New Taipei City 24891, Taiwan (R.O.C.)

Tel: +886-2-77396888

Fax: +886-2-77396887

Email: sales@edimax.com.tw

Support: support@edimax.com.tw

Europe Headquarters

Edimax Technology Europe B.V.

Add: Nijverheidsweg 25 5683 CJ Best The Netherlands

Tel: +31-499-377344

Fax: +31-499-372647

Email: sales@edimax.nl

Support: support@edimax.nl

USA Office

Edimax Computer Company

Add: 3350 Scott Blvd., Bldg. 15 Santa Clara, CA 95054, USA

Tel: +1-408-4961105

Fax: +1-408-9801530

Email: sales@edimax.com

Support: support@edimax.com